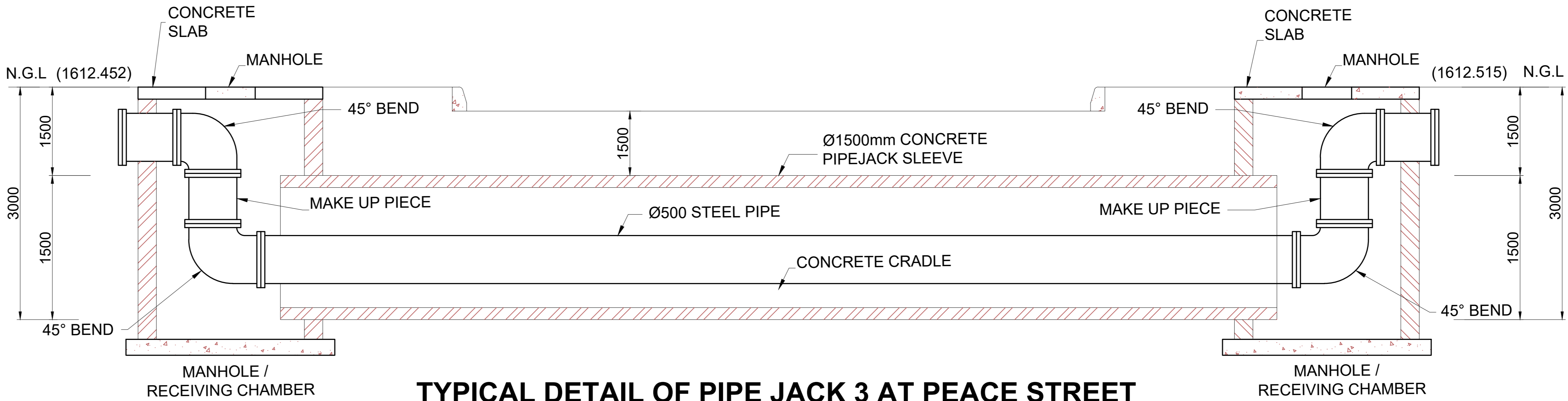
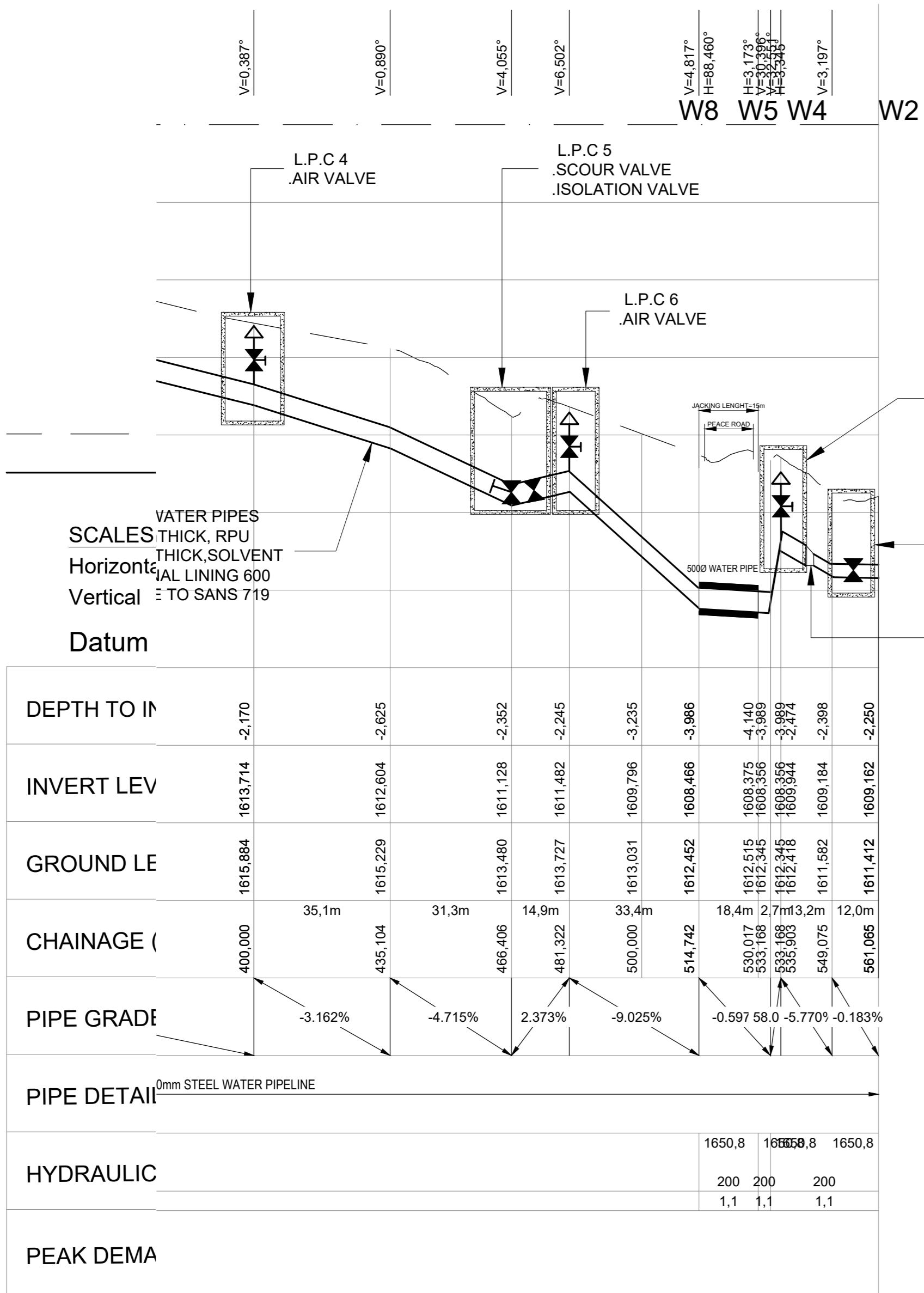


PIPELINE PLAN
SCALE 1:5000



TYPICAL DETAIL OF PIPE JACK 3 AT PEACE STREET
SUBJECT TO EXISTING SERVICES INTERSECTING ROADWAY

Engineer:

KEON
CONSULTING ENGINEERS
TECHNO
DESIGNS

Civil Structural & Transport Engineers

Client:

Johannesburg Water

Turbine Hall,
65 Mendi Place Street,
Newtown, Johannesburg

THESE NOTES SERVE AS AN ADDENDUM TO THE SPECIFICATION IN THE BILL OF MATERIALS (BOM) IN THOSE CASES WHERE THE BOM SPECIFICATIONS DIFFER FROM THESE NOTES. THESE NOTES SHALL TAKE PRECEDENCE ON ORIGINAL.

0 5 10 15 20 25 30 35 40 50mm

Engineer: T. Chikwata P. Eng (20140009)

Drawn By: M. Mulumbe

Designed By: T. Mapumo

Checked By: T. Chikwata

Signature: _____

Date: September 2023

CONCRETE NOTES:

1.0 SETTING OUT AND GENERAL:

1.1 THIS DRAWING SHOULD BE READ IN CONJUNCTION WITH ARCHITECT'S DRAWINGS.

1.2 ALL DIMENSIONS AND HEIGHTS ARE TO BE CHECKED ON SITE BEFORE WORK IS PUT IN HAND.

1.3 REPORT DISCREPANCIES TO ARCHITECT OR ENGINEER.

1.4 THIS DRAWING MUST NOT BE USED TO SCALE OFF. USE ONLY WRITTEN DIMENSIONS. CONTACT THE ENGINEER OR ARCHITECT WHERE CLARITY IS SOUGHT.

1.5 FOR SETTING OUT DATA, SETTING OUT POINTS AND DATUM LEVELS REFER TO SURVEY INFORMATION AND ARCHITECT'S DRAWINGS.

1.6 STRUCTURAL WORK IS TO BE CARRIED OUT IN ACCORDANCE WITH THE PROJECT SPECIFICATION AND THE RELEVANT S.A.N.S. SPECIFICATIONS. ALL CONCRETE WORK IS TO BE DONE IN ACCORDANCE WITH S.A.N.S. 1200G AND EARTHWORKS IN ACCORDANCE WITH S.A.N.S. 1200D.

1.8 CONSULT RELEVANT ARCHITECT'S, MECHANICAL, ELECTRICAL & PLUMBING DRAWINGS AND DETAILS AS RELEVANT FOR DRAINAGE, STORMWATER OUTLETS, RWOPS AND HOLES AND SLEEVES FOR THESE SERVICES. NO HOLES ARE TO BE CORED WITHOUT ENGINEERS WRITTEN APPROVAL.

2.0 FOUNDATIONS

2.1 ALL FOUNDATION EXCAVATIONS TO BE INSPECTED AND APPROVED IN WRITING BY THE ENGINEER BEFORE CONCRETE IS CAST.

2.2 NO FOUNDATIONS ARE TO BE CAST IN FILL MATERIAL. A 50mm THICK LAYER OF 10MPa / 19mm BLINDING CONCRETE IS TO BE CAST UNDER ALL REINFORCED BASES, REINFORCED STRIP FOOTINGS AND GROUND BEAMS.

2.3 ANY OVER EXCAVATIONS ARE TO BE MADE GOOD WITH 10MPa / 19mm CONCRETE AT THE CONTRACTOR'S EXPENSE.

2.4 BACKFILLING OVER COLUMN BASES SHALL BE DONE WITH AN APPROVED MATERIAL COMPACTED IN LAYERS IN ACCORDANCE WITH THE PROJECT SPECIFICATIONS.

2.5 ALL CRAWLER BEARING PRESSURE UNDER:

CONCRETE BASES = 150kPa

STRIP FOOTINGS = 100kPa

3.0 CONCRETE

3.1 CONCRETE CHARACTERISTIC 28 DAY STRENGTH:

BASES: 25MPa / 19mm

STRIP FOOTINGS: 20MPa / 19mm

SURFACE BEDS: 30MPa / 19mm

SUSPENDED SLABS & BEAMS: 30MPa / 19mm

COLUMNS: 30MPa / 19mm

3.2 CONCRETE MIX DESIGNS FOR ALL GRADES OF CONCRETE TO BE GIVEN TO ENGINEER FOR PERUSAL AND COMMENT. CONCRETE MIX DESIGNS FOR SURFACE BEDS TO HAVE MINIMUM BLEED CHARACTERISTICS.

3.3 ALL CONCRETE TO BE ADEQUATELY CURED BY KEEPING SURFACES CONTINUOUSLY DAMP FOR AT LEAST 5 DAYS AFTER CASTING.

3.4 ALL CONCRETE TO BE CONSTRUCTED TO THE S.A.N.S. 1200G PERMISSIBLE DEVIATION DEGREE OF ACCURACY CLASS II UNLESS SPECIFIED OTHERWISE.

3.5 CONCRETE CUBE TEST RESULTS TO BE SUBMITTED TIMEOUSLY TO ENGINEER FOR PERUSAL, RECORDS, COMMENT AND APPROVAL.

4.0 REINFORCEMENT

4.1 CHARACTERISTIC STRENGTH:

MILD STEEL: 250N/mm²

HIGH YIELD STEEL: 450N/mm²

4.2 ALL REINFORCEMENT TO BE CHECKED AND APPROVED BY ENGINEER BEFORE ANY CONCRETE IS CAST. 48 HOURS WRITTEN NOTICE TO BE GIVEN TO ENGINEER BEFORE TIME OF INSPECTION.

4.3 LAP LENGTH TO REINFORCING TO BE MINIMUM 50 x SMALLER BARK DIAMETER, UNLESS OTHERWISE NOTED.

4.4 MESH REINFORCEMENT REFERENCE 245 TO BE PLACED IN SLAB (TOP) MINIMUM LAPS = 300mm UNLESS OTHERWISE NOTED.

4.5 THE CONTRACTOR MUST TAKE PARTICULAR CARE TO ENSURE THAT THE SPECIFIED COVER TO ALL REINFORCEMENT HAS BEEN ATTAINED THROUGHOUT BEFORE THE ENGINEER IS CALLED TO SITE FOR INSPECTION OF THE REINFORCEMENT.

4.6 COVER TO REINFORCEMENT:

STRIP FOOTINGS: 50mm

BASES: 50mm

COLUMNS AND WALLS: 50mm

SUSPENDED SLABS: 30mm

5.0 PROPPING TIMES FOR:

SLABS AND BEAMS: 14 DAYS IN HOT WEATHER, 21 DAYS IN COLD WEATHER.

5.1 CANTILEVER SLABS AND BEAMS: 21 DAYS (SUBJECT TO CUBE TEST RESULTS BEING SUBMITTED TIMEOUSLY TO ENGINEER FOR APPROVAL).

5.2 NO DE-PROPPING OF SUSPENDED ELEMENTS UNTIL INSTRUCTED BY ENGINEER.

5.3 CONCRETE FINISHES: UNLESS NOTED OTHERWISE

COLUMNS AND WALLS: OFF SHUTTER

BEAMS AND SLAB SOFFIT: OFF SHUTTER

TOP OF SUSPENDED SLABS: STEEL FLOAT

SURFACE BEDS: POWER FLOAT

5.4 SIDES OF GROUND BEAMS TO BE SHUTTERED.

Refer To Drawing No:

Key Plan:

Project: JW14406-LINBRO PARK TOWER (WITH ASSOCIATED WORKS)

Description: PLAN&PROFILE FOR PIPEJACK 3

Issued For: TENDER

Size	Scale	Sheet No	Original Date
A1	As Shown	1 OF 1	Sept 2023

Project No	Drawing No	Revision
C01486	CP-14	T0